



Pusan National University



1st 

(Overall: 473rd)

QS 2026 World Ranking

Among Korean national universities

1st 

(Overall: 81st)

QS Asia University Rankings 2025

Among Korean national universities

1st 

(Overall: 98th)

THE Asia University Rankings 2025

Among Korean national universities

1st 

(Overall: 401-500th)

ARWU Shanghai Ranking 2025

Among Korean national universities

2nd 

(Overall: 13th)

THE Impact Rankings 2025

2nd in Korea

 **APRU**

**Association of top universities
around the Pacific Rim**

Joined 61st in the world, 6th in Korea

PNU AT A GLANCE



Established

1946
(Korea's first and
best national
university)



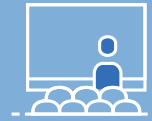
Campuses

4 in the Busan
Metropolitan Area



Students

34,659 total
- Undergraduate: 26,294
- Graduate: 8,365
- International: 2,081
(from 94 countries)



Professors

- Professors: 3,647
- Faculty: 754



Alumni

270,000+

INTERNATIONAL PARTNERS

692 Overseas Partner Institutions in **62** Countries (As of July 2025)

- University of Glasgow
- University of Zurich
- University of Geneva
- Vienna University of Technology
- University of Twente
- University of Strathclyde
- TU Darmstadt

Europe

29 Countries / 215 Partners

- Nanyang Technological University
- Shanghai Jiao Tong University
- University of Malaya
- National Taiwan University
- The University of Osaka
- Kyushu University

Asia

22 Countries / 319 Partners

The Americas

6 Countries / 122 Partners

- SUNY Oswego
- Georgia State University
- Southern Utah University
- St. Cloud State University
- University of Regina

Africa

3 Countries / 6 Partners

- Chouaib Doukkali University
- Al Akhawayn University
- Adama Science and Technology University

Oceania

2 Countries / 23 Partners

- The University of New South Wales
- University of Technology Sydney
- Curtin University
- University of Newcastle



EXCHANGE & VISITING STUDENT PROGRAM

Eligibility

- Undergraduate & Graduate students
- Fluency in either English or Korean (no language certificate required)

Duration

- 1 semester (4 months)
- 1 Academic Year (10 months)

Process

- Nomination → Application → Admission → Pre-arrival → Study Abroad
- # Official transcript will be sent via email to the student and their home university coordinator.

Scholarship

Classification	Benefit	Qualification
GKS(NIIED)	Monthly Grant(450USD) + Airfare	Foreign Nationality Student with CGPA 80% or higher
ASEM-DUO	4,000 EUR	Refer to asemduo.org

Academic Information

Course Load	Courses in English
<ul style="list-style-type: none"> - Most courses are 3 credits (3 hrs/week, 45 hrs/semester) - Undergraduate: Max. 19 credits - Graduate: Max. 10 credits * <i>Maximum credits may vary by department</i> 	<ul style="list-style-type: none"> - 429 English courses available in 108 majors * <i>subject to semester-based changes</i>



Benefits

- Free Korean Language Classes (Based on Proficiency)
- On-Campus Housing (Dormitory Guaranteed)
- Buddy Program (Paired with a PNU Student)
- Free Cultural Field Trips & University Events

Opportunity to Dive into PNU With Friends



Buddy Program



Daedong Festival



Field Trip



ACADEMIC PROGRAMS

UNDERGRADUATE

16

Colleges /
Schools

105

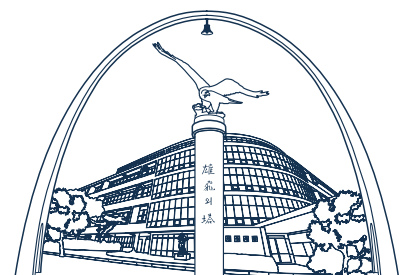
Departments
(Majors)

89

Master's
Programs

87

Doctoral
Programs



UNDERGRADUATE

College of Humanities

English Language and Literature,
Korean Language and Literature,
Chinese Language and Literature,
Japanese Language and Literature,
French Language and Literature,
German Language and Literature,
Russian Language and Literature,
History, Philosophy,
Korean Literature in Classical Chinese,
Archaeology, Language and Information

College of Social Sciences

Public Administration,
Political Science and Diplomacy,
Social Welfare, Sociology, Psychology,
Library, Archive and Information Studies,
Media and Communication

College of Natural Sciences

Mathematics, Physics, Statistics,
Chemistry, Microbiology,
Molecular Biology, Biological Sciences,
Geological Sciences, Atmospheric Sciences,
Oceanography Engineering

College of Engineering

School of Mechanical Engineering,
School of Materials Science and Engineering,
School of Electrical and Electronics Engineering,
Polymer Science and Engineering,
Organic Material Science and Engineering,
Chemical and Biomolecular Engineering,
Environmental Engineering, Architecture,
Architectural Engineering,
Urban Planning and Engineering,
Civil Engineering, Aerospace Engineering,
Industrial Engineering,
Naval Architecture and Ocean Engineering

College of Education

Korean Language Education,
English Language Education,
German Language Education,
French Language Education,
Education,
Early Childhood Education,
Special Education,
Social Studies Education,
History Education,
Geography Education,
Ethics Education,
Mathematics Education,
Physics Education,
Chemistry Education,
Biology Education,
Earth Science Education,
Physical Education

College of Economics and International Trade

School of Global Studies,
School of International Trade,
School of Economics,
School of Public Policy and Management,
Department of Tourism and Convention

School of Business

Business Administration

College of Pharmacy

School of Pharmacy

College of Human Ecology

Child Development & Family Studies,
Clothing & Textiles,
Food Science and Nutrition,
Interior & Environment Design,
Sport Science

College of Arts

Music, Fine Arts, Plastic Arts,
Korean Music, Dance, Design,
Art Culture and Image

College of Nanoscience and Nanotechnology

Nanoenergy Engineering,
Nanomechanics Engineering,
Optics and Mechatronics Engineering

College of Natural Resources and Life Sciences

Plant Bioscience, Horticultural Bioscience,
Animal Science,
Food Science and Technology,
Life Science and Environmental Biochemistry,
Biomaterials Science,
Bio-Industrial Machinery Engineering,
Applied IT and Engineering,
Bioenvironmental Energy,
Landscape Architecture,
Food and Resource Economics

College of Information and Biomedical Engineering

School of Computer Science and Engineering,
School of BioMedical Convergence Engineering,
School of Advanced Convergence

University College

School of Advanced Convergence,
Global Open Major Division

College of Medicine

Preliminary Medicine, Medicine

College of Nursing

Nursing

GRADUATE

5

Professional
Graduate
Schools

International Studies,
Data Science, Dentistry,
Korean Medicine, Law

10

Specialized
Graduate
Schools

Business, Economics and International Trade,
Public Administration, Education, Industry, Environment,
Technology Entrepreneurship, Finance,
Convergence in Biomedical Science, Nursing Science

* Departments/faculty NOT available to exchange students: Dentistry, Medicine, Korean Medicine, Nursing, Law

ACADEMIC CALENDAR

☼ Fall Semester (September – December)

9

September

- 1. Fall Semester Begins
<16 weeks>
- Orientation

10

October

- 20. Nomination Deadline for Spring Semester
- 30. Application Deadline for Spring Semester
 - Course Withdrawal
 - Midterm exams

11

November

2

February

- Nomination & Application Open for Fall Semester
- Course Registration for Spring Semester
- Application Open for PNU Summer School

1

January

12

December

- Final Exams
- Fall Semester End
- Winter Break
<11 weeks>

☼ Spring Semester (March – June)

3

March

- 2. Spring Semester Begins
<16 weeks>
- Orientation

4

April

- 20. Nomination Deadline for Fall Semester
- 30. Application Deadline for Fall Semester
 - Application Deadline for PNU Summer School
 - Course Withdrawal
 - Midterm exams

5

May

8

August

- Nomination & Application Open for Spring Semester
- Course Registration for Fall Semester
- PNU Summer School End

7

July

- PNU Summer School Begins

6

June

- Final Exams
- Spring Semester End
- Summer Break
<11 weeks>



01

Experiencing Busan – and Beyond

Enjoy summer at its best in the picturesque city of Busan, a coastal gem famous for its stunning beaches and vibrant markets. With the support of kind staff and friendly PNU buddies, you'll feel right at home.

02

Intensive Korean Class

Seize the chance to enhance your Korean skills and broaden your horizons. Join a class suited to your level, determined by a placement test, to maximize your learning.

03

K-Culture Activities

Enjoy an exhilarating cultural experience through special classes (such as Taekwondo, Korean cuisine, K-pop Dance, and K-Beauty) and visits to famous tourist spots around Busan.

Program Specifics

Common Features	Credits	Operation Schedule
4-week program	3 credits (Korean Studies)	July 1 – 28

Eligibility

- This program is open to all international students who have completed at least one semester in college or university.

How to Apply

- Students from exchange partner universities must be nominated by their home institution before submitting the online application.
- **Deadline: April 30, 2026**
- **Early bird by March 31, 2026**
- ** Dates are subject to change.*



Nomination



Application

Program Fee

(1 USD = 1,400 KRW)

- Regular Fee: 3,010,700 KRW (≈ 2,150 USD)
- 20% Group* Discount for PNU exchange partner universities and APRU member universities: 2,408,560 KRW (≈ 1,720 USD)
- ** more than 6 students, based on the number of final payment registrations*
- 15% Discount for PNU exchange partner universities and APRU member universities: 2,559,095 KRW (≈ 1,830 USD)
- 10% Early Bird Discount: 2,709,630 KRW (≈ 1,940 USD)
- ** The above costs are subject to change depending on exchange rate fluctuations and local circumstances.*

Inquiry

- PNU Summer School: summer.pusan.ac.kr
- E-mail: summer@pusan.ac.kr
- Tel: +82-51-510-3853



International Programs

Department of Global Studies (DGS)



DGS Website

- English-taught undergraduate program
- Interdisciplinary curriculum
- Courses in law, politics, history, culture, business, and more
- Faculty of native or near-native English-speaking professors with global academic backgrounds

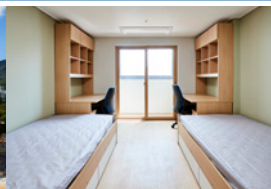
Dormitory



PNU dormitory

- On-campus housing(dormitory)

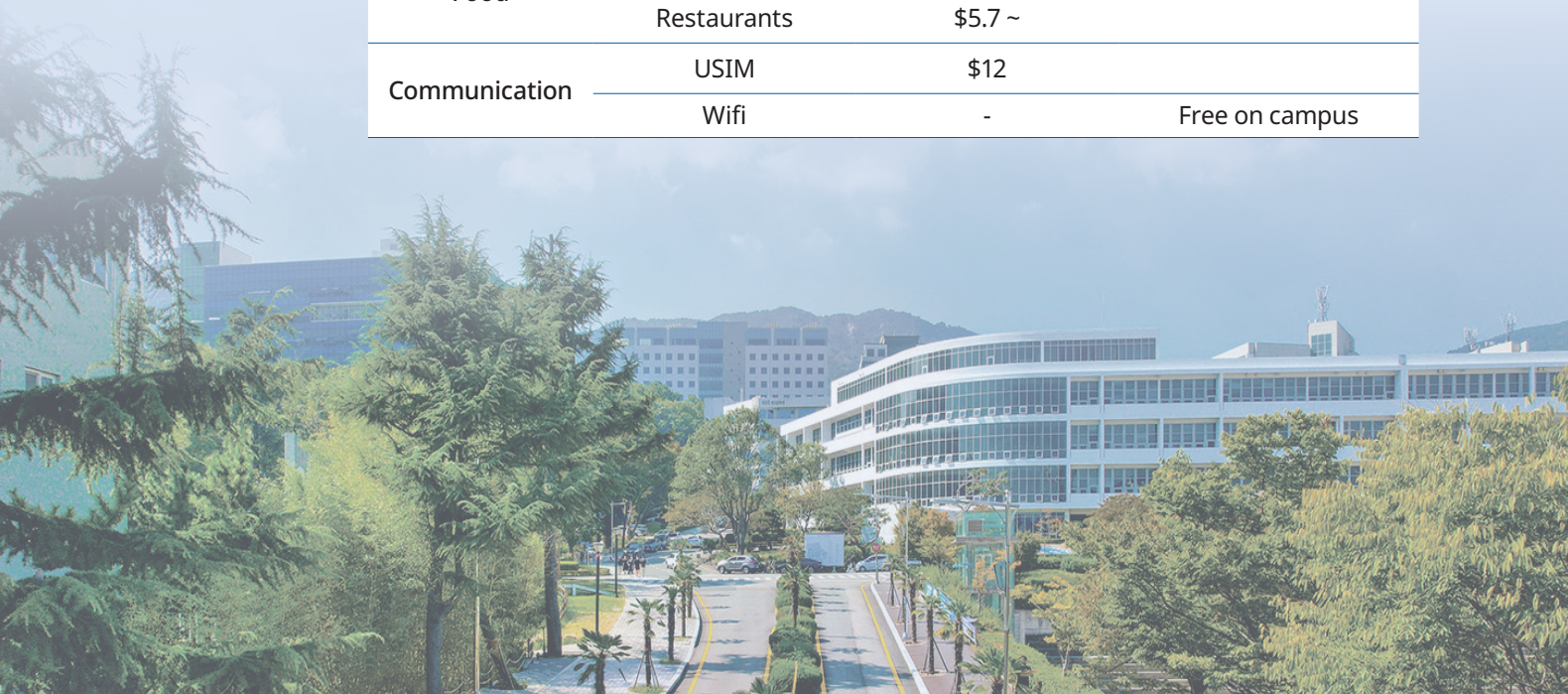
Dorm	Room Type	Fee (per semester)	Meal Plan (per semester)
Jayoo (Female)	Double	\$610	\$650 <i>*Costs vary by meal plan</i>
Woongbi (Male)	Double	\$550	
Jili (Male)	Single	\$750	



Life in PNU

- Living cost in Busan

Category	Item	Approximate Cost	Remarks
School	Dormitory Fee	\$1,250	3 meals a day included
	Books & Supplies	\$143	Differs depending on the departments
Transportation	Subway	\$1 ~ 2	
	Bus	\$1 ~ 2	
	Taxi	\$3.4 ~	Basic fare
Food	Campus Cafeteria	\$2.8 ~	
	Restaurants	\$5.7 ~	
Communication	USIM	\$12	
	Wifi	-	Free on campus



WHY BUSAN

Located in a lively and dynamic city

1st Maritime city in Korea

- **7th** busiest container port in the world (2024)

Highlight of the
Korean cultural industry

- G-STAR (Game Festival)
- Busan International Film Festival (BIFF)


**Busan
Metropolitan
City**

2nd largest city in Korea

- Population of **3.3M**,
GDP of **84B** USD (2023)

The best travel city
frequently selected by

Trip.com

Consumer Insight

**NATIONAL
GEOGRAPHIC**

* For more information on Busan go to <http://english.busan.go.kr>



PNU International
E-mail. (Inbound) global@pusan.ac.kr
(Outbound) abroad@pusan.ac.kr
(Student Support) services@pusan.ac.kr
Web. <https://international.pusan.ac.kr>



PNU Language Education Institute
E-mail. interedu@pusan.ac.kr
Web. <https://lei.pusan.ac.kr>



PUSAN NATIONAL UNIVERSITY

2, Busandaehak-ro 63beon-gil, Geumjeong-gu, Busan, 46241, Rep. of KOREA